

urban-gro[®]

The Soleil[®]

315W Ceramic Metal Halide Veg Grow System

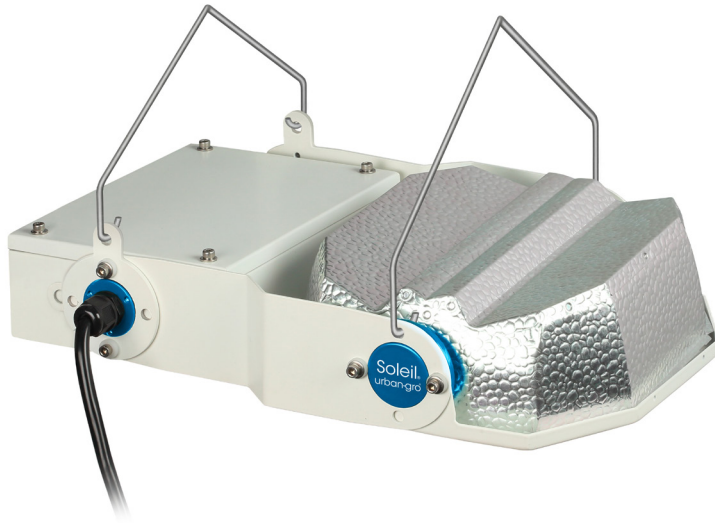
urban-gro is proud to introduce the Soleil 315W Ceramic Metal Halide (CMH) as the next generation lighting solution for the vegetative stage.

Soleil 315W

The Soleil is the pinnacle of CMH horticultural fixture design. Reflectors are used to ensure that the light penetrates deeper into the crop canopy in the most efficient way possible.

These aluminum reflectors are highly polished and anodized, and the microscopic small facets provide a diffused light pattern and discourage accumulation of deposits on the lamp.





Available With



Wide Spread Reflector



Diameter: 1.5" (38 mm)
MOL: 7.6" (193 mm)
LCL: 3.5" (89 mm)
Base: PGZX18

Technical Specifications

Input Voltage	208 – 277Vac
Input Current Max	5.4A/6 ms max. at 277Vac
Input Frequency	50 – 60Hz
Power Factor	0.95 min
Current THD	< 10%
Dimming	50 – 100%
Controls*	1 – 10V
Output Power	315W
Amp Draw:	1.65A @ 208V, 1.46A @ 240V, 1.25A @ 277V
Lamp Type	HID: Ceramic and Quartz Metal Halide 315W
Lamp Voltage	90 – 170V
Lamp Current	0.3 – 3.6A
Operating Frequency	150 – 180Hz Square Wave
Efficiency	94 to 96%
Lamp Mounting Position	Universal
Weight:	11 lbs.

*Sold separately. Consult us. Dimming Only.

Ordering Information

240V	Cord Length	Plug Type	Reflector	Pre-assembled Mount
MODEL SOL240V	15 = 15ft	615 = 6 – 15	RFD = Wide Spread Reflector	I = In-Line Mount

Example: **SOL240V 15 615 RFD I**

277V	Cord Length	Plug Type	Reflector	Pre-assembled Mount
MODEL SOL277V	08 = 8ft 12 = 12ft	L715 = 277v 15 AMP twist lock L720 = 277v 20 AMP twist lock	RFD = Wide Spread Reflector	I = In-Line Mount

Example: **SOL277V 12 L720 RFD I**

