

FLUENCE

BY OSRAM



Spyder 2i

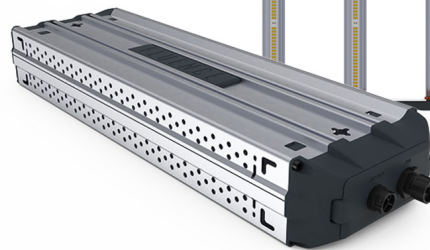
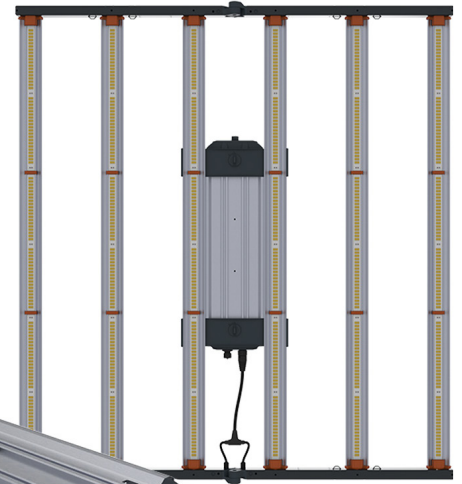
The **SPYDR 2i** is a high-performance top-lighting solution for commercial horticulture cultivation. Designed for growers to push the envelope with high PPFd cultivation practices. Not intended for beginner growers or grows without CO₂ supplementation.

Specifications

- **Light Source:** LED
- **Spectrum:** PhysioSpec Indoor™
- **PPF:** 1700 µmol/s
- **Input Power:** 630W
- **Efficacy:** 2.7 µmol/J
- **Dimming:** 0-10V Source
- **Light Distribution:** 120°
- **Average Life:** L90: > 51,000hrs
- **Power Factor:** >90%
- **Thermal Management:** Passive
- **Max. Ambient Temperature:** 95°F / 35°C
- **Input Voltage:** Autosensing 100-277V, 347V, 400V & 480V
- **Mounting Height:** ≥ 6" (15.2cm) Above Canopy
- **Certifications:** UL 8800, UL 1598 Wet-Location Rated, IP66, CE & DLC
- **Warranty:** 5 Year Standard Warranty
- **Weight:** 27lbs. 11oz
- **Dimensions:** 42.8" L x 46.99" W x 4.3" H

Max Amperage by Voltage Services

Voltage	120V	208V	240V	277V	347V	347V	347V
Amperage	5.40A	3.65A	3.01A	2.28A	1.86A	1.62A	1.34A



SPYDR 2i

630W LED Light

SPYDR 2i

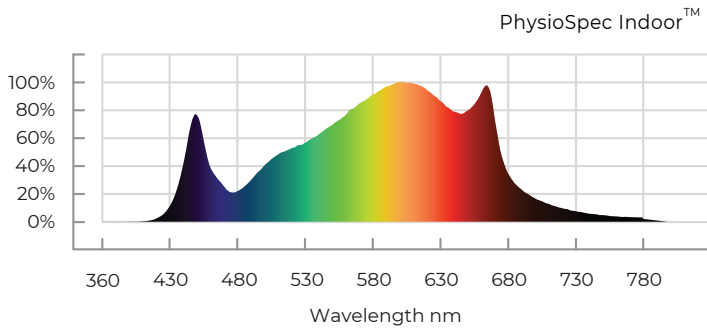
- ✓ LED Light 630W
- ✓ Autosensing 100-277V, 347V, 400V & 480V
- ✓ Easy Installation and Maintenance
- ✓ 5 Year Standard Warranty



Ordering Information

Family	SR: SPYDR
Model	2i: PLUS
Spectrum	1: PhysioSpec Indoor™
Input Voltage	1: 100-277V 3: 347V 4: 400V 5: 480V
AC Power Cord	06: 6 ft (1.83m) 15: 15 ft (4.57m)
AC Plug Type	N5P: NEMA 5-15P N6P: NEMA 6-15P L7P: NEMA L7-15P TFP: Schuko Type F PTP: Pigtails
DC Cord Extension	00: None 03: 3 ft (.91m) 06: 6 ft (1.83m)
Mounting	W: Waterfall Mounts S: Solid-Decking Mounts M: 2-Point Hanging Lances A: 2-Point Adjustable Hanging Kit

Spectra



Dimensions

