

urban-gro®



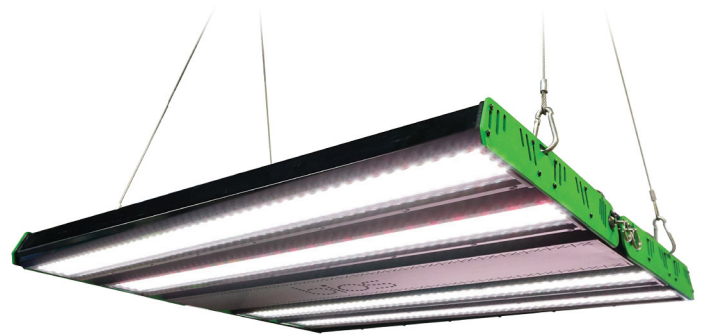
SCIENTIFICALLY
ENGINEERED

BIOS Icarus Gi2

- ✓ Lights Plans Designed by urban-gro
- ✓ Product Provided by urban-gro
- ✓ Soleil® Wireless Controls Offered by urban-gro

Features And Benefits

- Fully assembled, industrial grade construction and durability
- Optimized spectrum for all phases of plant growth and production
- Scientifically engineered spectrum to maximize photosynthesis, growth, yield, and quality
- >40% less energy required and heat generated than 1000W HPS to produce an equivalent amount of delivered PAR
- Superior delivered PAR output and PAR photon efficacy as compared to 1000W HPS
- Superior lighting uniformity across the plant canopy
- Unique heat pipe thermal design allows for passive cooling, which eliminates inferior features such as fans, moving parts, and noise
- Sustainable and environmentally friendly mercury-free lighting source compared to traditional technologies (HID and fluorescent) which require hazardous waste disposal
- Adjustable LED panels allowing for more focused or more diffuse lighting distribution over the plant canopy
- Applications: Indoor crop production, greenhouses, growth chambers, retro-fit existing HID or new construction controlled environment grow facilities



Bios Icarus Gi2 Led Grow Light

The BIOS Icarus™ Gi2 LED Grow Light is the controlled environmental agricultural industry's superior choice for commercial crop production. The thoughtfully inspired Icarus Gi2 has the highest Photosynthetically Active Radiation (PAR) output and PAR photon efficacy in a truly industrial grade LED fixture specifically designed for the industry.

The Icarus Gi2 LED Grow Light has an optimized broad spectrum that maximizes photosynthesis and plant growth while also providing the ideal conditions for a very comfortable visual experience and crop assessment.

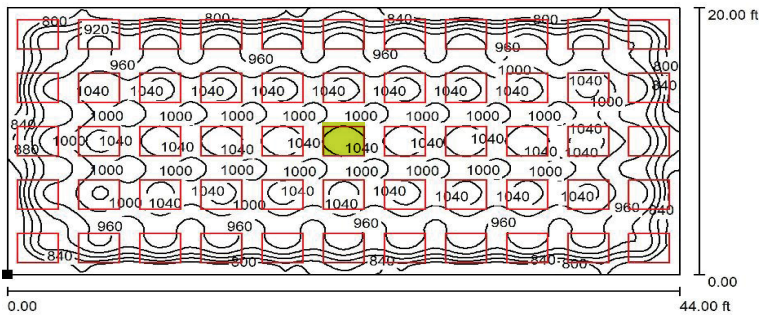
Engineered for science, this unique industrial grade fixture fills the need for a low profile, high output, energy efficient, and cost competitive option that is lacking in the LED grow light market today.

Icarus Gi2 Preliminary Specifications

Fixture Wattage:	640 Watts
Voltage:	100-277VAC & 277-480VAC
Photosynthetic Photon Flux (µmol PAR/s):	1359 µmol/s
PAR Photon Efficacy (µmol PAR/J):	2.12 umol/J
Optimal Mounting Height:	12"- 36" (30-91 cm) above the plant canopy
Optimal Footprint:	4' x 4' (1.2 m x 1.2 m), 16 ft ² (1.5 m ²) 5' x 5' (1.5 m x 1.5 m), 25 ft ² (2.3 m ²)
Average Photosynthetic Photon Flux Density (across 4' x 4' areas):	~800 µmol/(m ² · s)
Spectrum:	Broad "White" spectrum not purple
% Blue (400-500 nm)	19%

Fixture Dimensions:	33" long x 28" wide (83.8 cm x 71.1 cm)
Fixture Weight:	40 lbs (18 kg)
Housing and Finish:	Powder coated extruded aluminum
Mounting:	Y-fit Gripple Hangers
Dimmability:	0-10 V
Rated Power Factor:	>90%
Warranty:	5 Year Limited
Ingress Protection:	Wet Location Rated
Certifications:	UL1598, UL 8750, TÜV SÜD America, RoHS, FCC
Photometrics:	Leading Testing Laboratories

Typical Room Layout of 44' x 20'



Icarus Gi2 at 36" Mounting Height Above Canopy

Average PPFD: 1028 µmol/m² · s⁻¹
 Minimum: 992 µmol/m² · s⁻¹
 Maximum: 1070 µmol/m² · s⁻¹
 Min/Avg: 0.965
 Min/Max: 0.927

Icarus Ti Spectral Graph

